

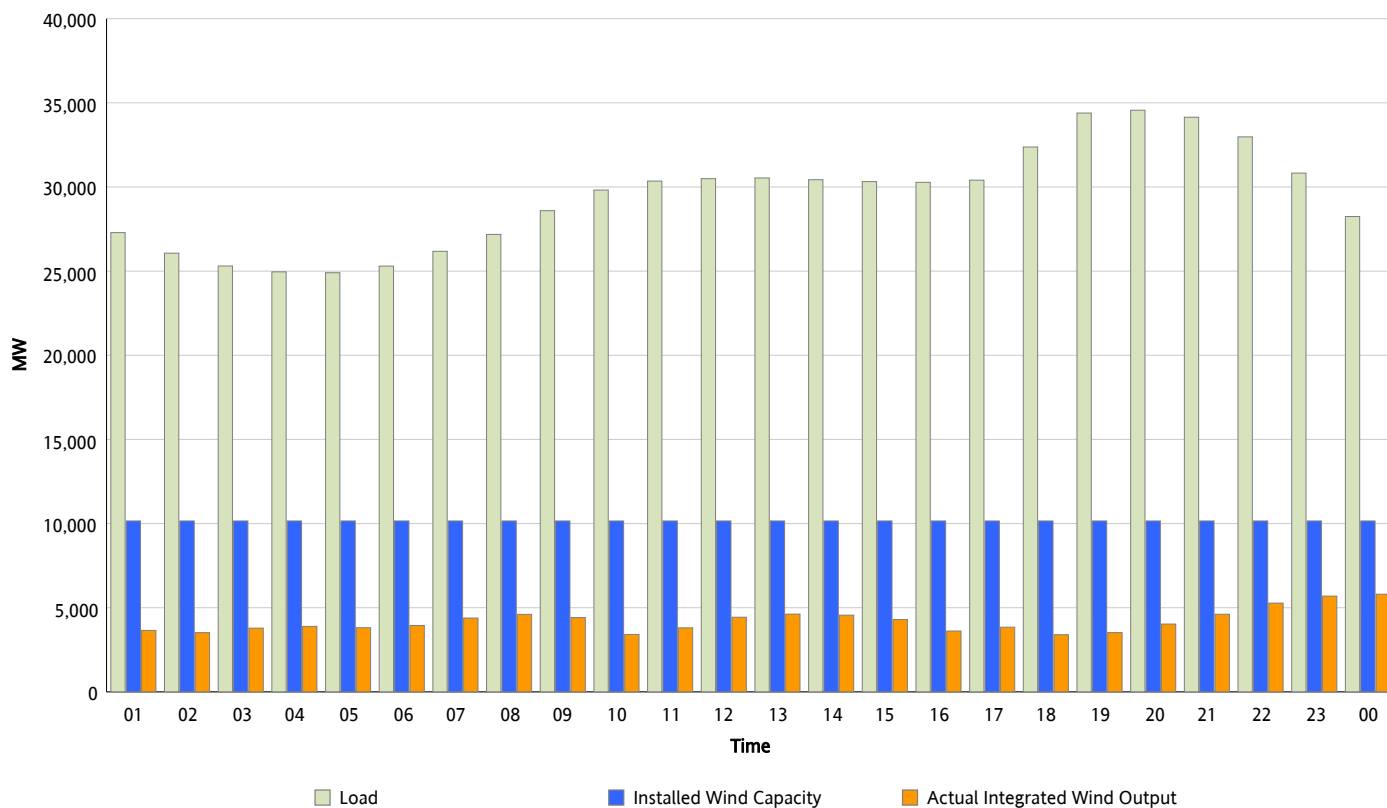


ERCOT Grid Operations

Wind Integration Report : 12/16/2012

Peak Load	34,562 MW
Load Peak Hour (HE)	20
Wind Over Peak	4,029 MW
Wind Record 11/10/12	8,521 MW
Max Wind Value*	6,194 MW
Wind Peak Time	23:59
Wind Integration %	22.9 %

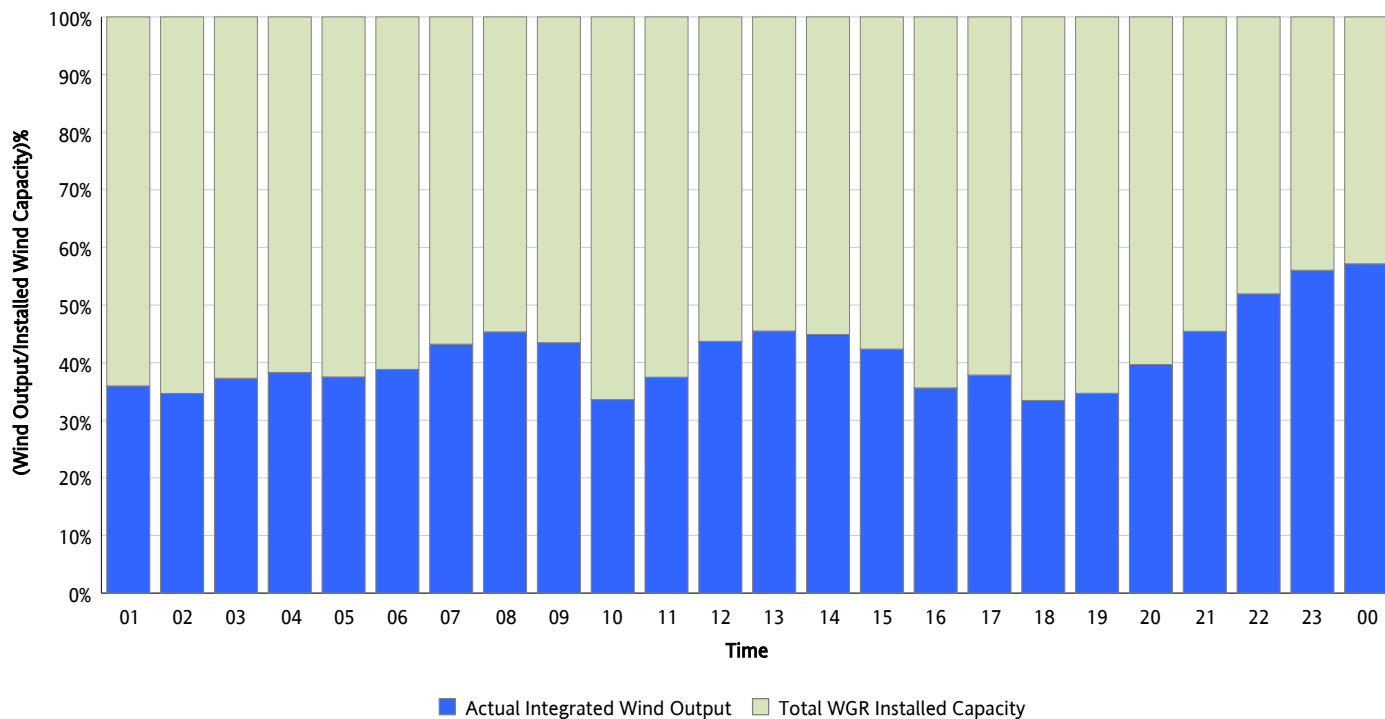
Hourly Average Actual Load vs. Actual Wind Output
12/16/2012



** Wind Record and Wind Max represent instantaneous values and the rest of the values are integrated over the hour*

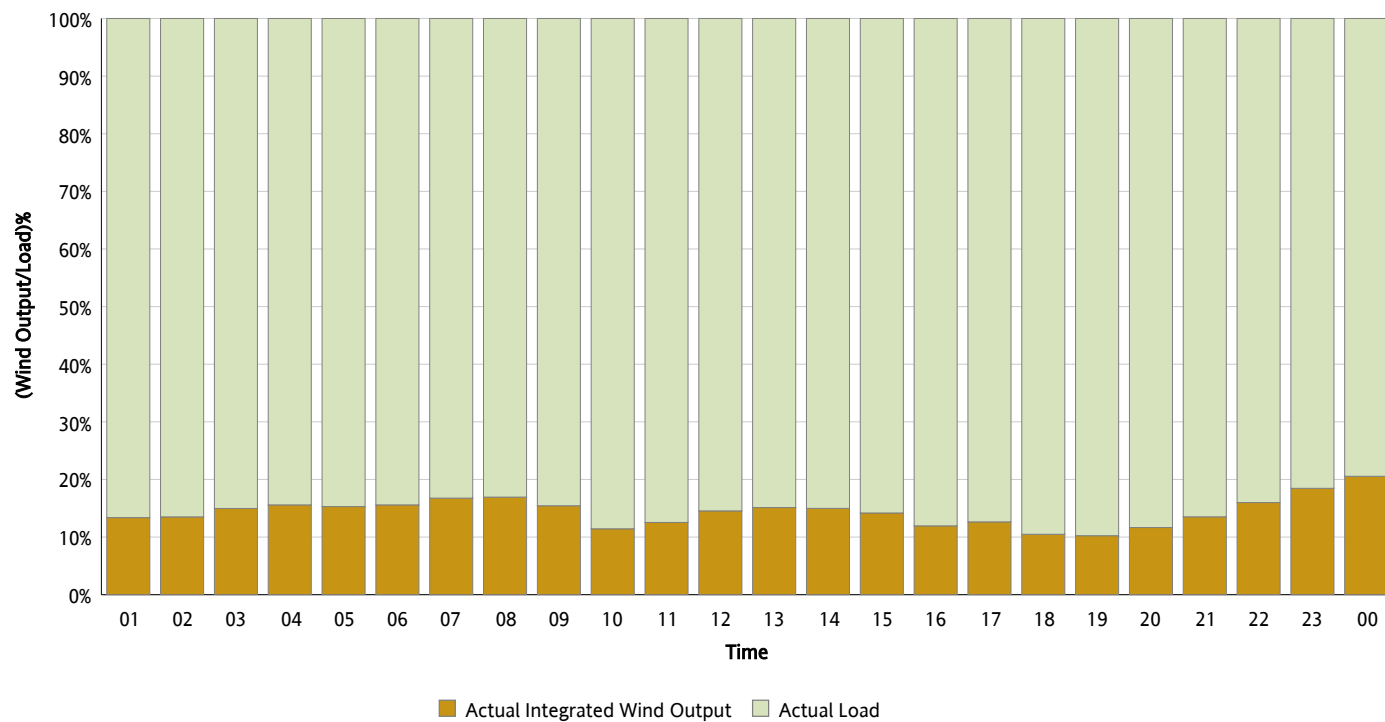
Actual Wind Output as a Percentage of the Total Installed Wind Capacity

12/16/2012



Actual Wind Output as a Percentage of the ERCOT Load

12/16/2012



ERCOT Load vs. Actual Wind Output

12/09/2012 - 12/16/2012

